

Historic Chapels in Sai Kung Peninsula



1

Tai Long



Immaculate Conception Chapel  
built in 1867

2

Chek Keng



Holy Family Chapel  
built in 1867

3

Tan Ka Wan



St. Peter's Chapel  
built in 1873

4

Sham Chung



Epiphany of Our Lord Chapel  
built in 1879

5

Pak Sha O



Immaculate Heart of Mary Chapel  
built in 1880

6

Yim Tin Tsai



St. Joseph's Chapel  
built in 1890

7

Pak Tam Chung



Our Lady of the Seven Sorrows  
Chapel built in 1900

8

Leung Shuen Wan



Lung Shuen Wan Chapel  
built in 1910

9

Long Ke



Nativity of Our Lady Chapel  
built in 1918

10

Wong Mo Ying



Rosary Chapel  
built in 1923

11

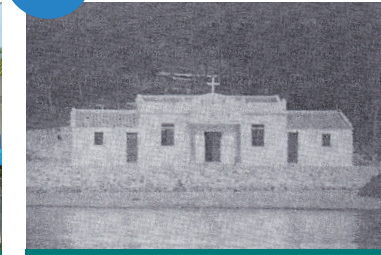
Sai Wan



Star of the Sea Chapel  
built in 1953

12

Sha Tsui (drowned)



Immaculate Heart of Mary Chapel  
built in 1953